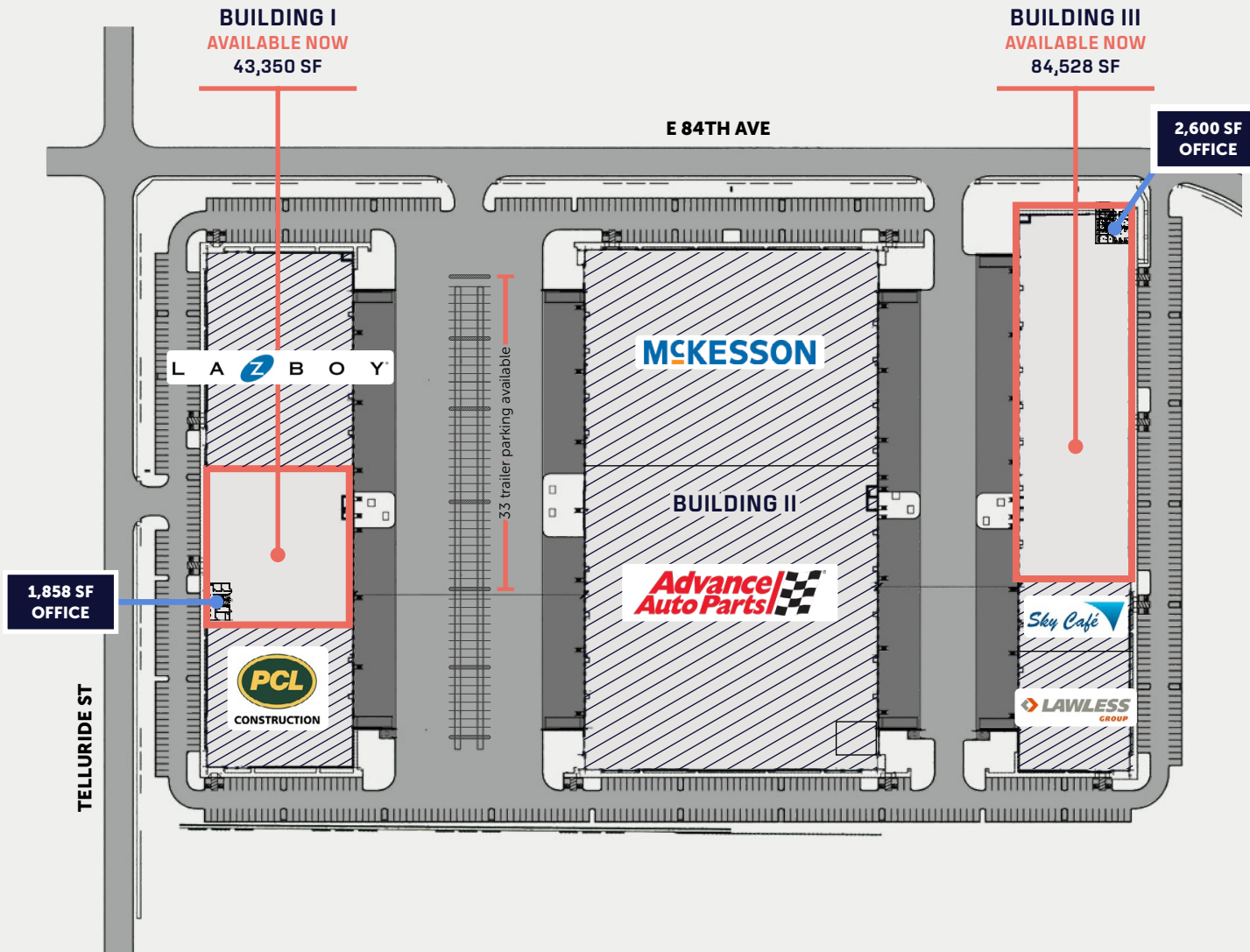


Ascent Commerce Center

CLASS A INDUSTRIAL PARK LOCATED IN COMMERCE CITY, CO

16,640 - 84,528 SF spaces available now





Building I

AVAILABLE NOW

43,350 SF AVAILABLE
Available for Immediate Occupancy

Building III

AVAILABLE NOW

84,528 SF AVAILABLE
Available for Immediate Occupancy

WATER & SEWER

South Adams County

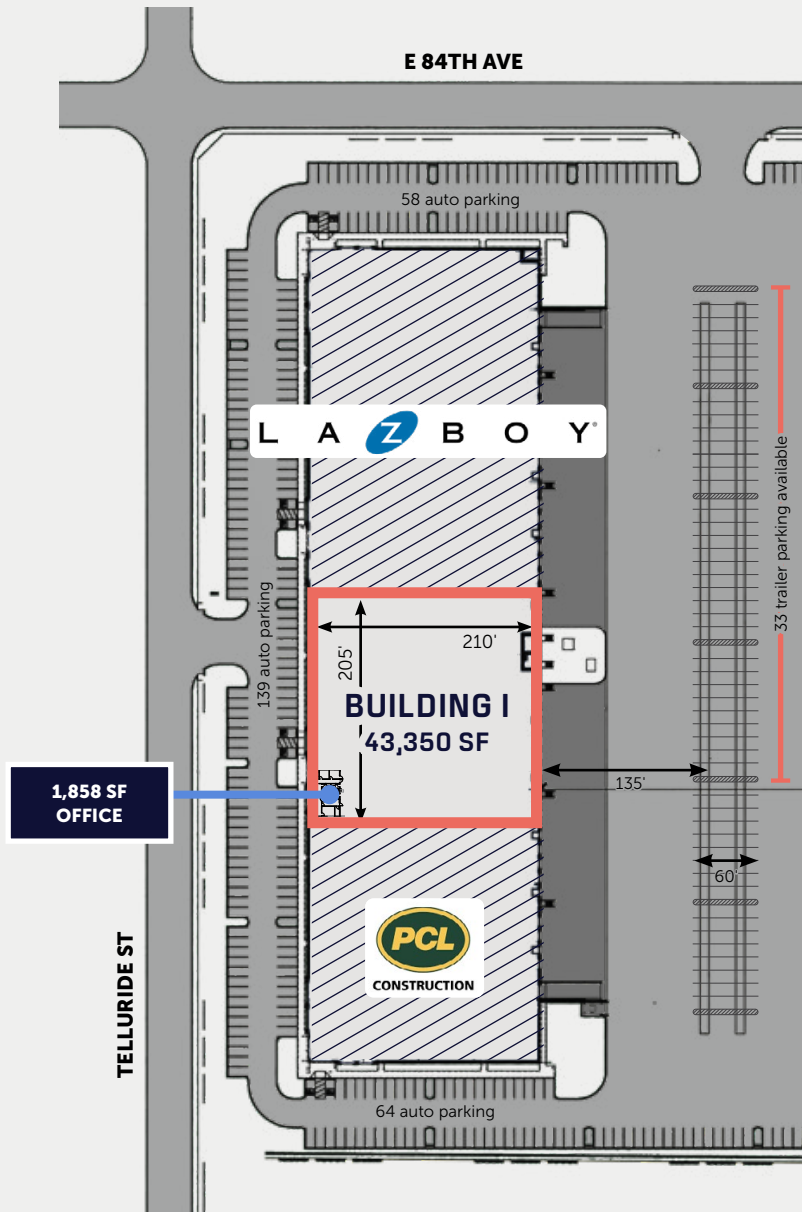
ELECTRIC

United Power

GAS

Xcel Energy

AVAILABLE NOW

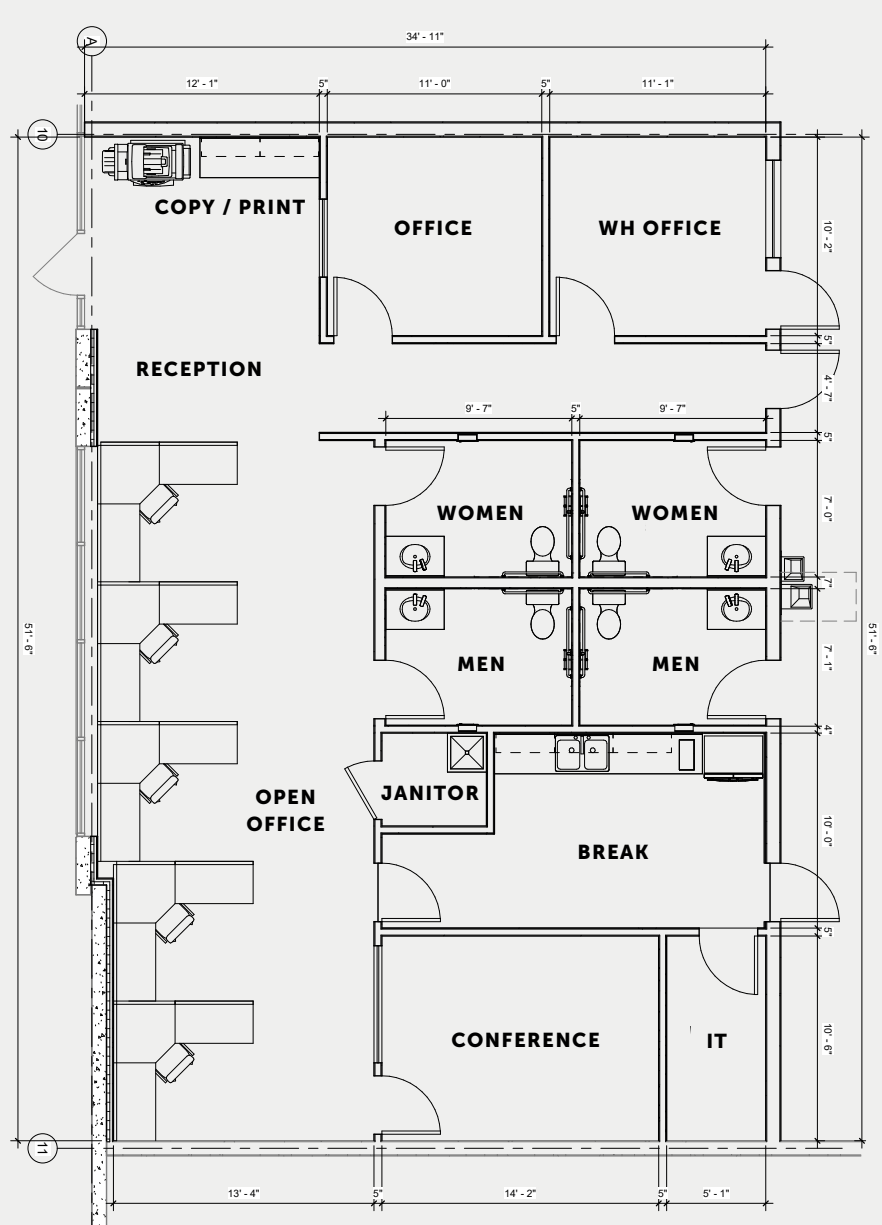


43,350 SF AVAILABLE

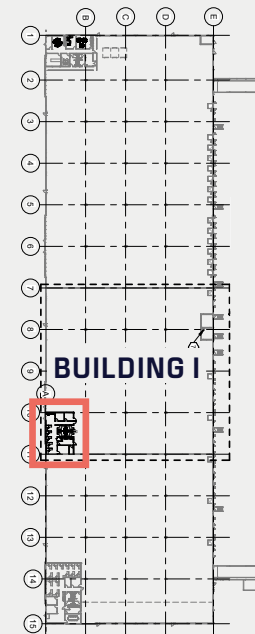
- 76 auto parking available
- up to 33 trailer parking available
- 32' clear height
- 10 docks (3 levels)
- 6" thick unreinforced slab
- 2,500-amp 480/277v power service
- ESFR sprinkler system

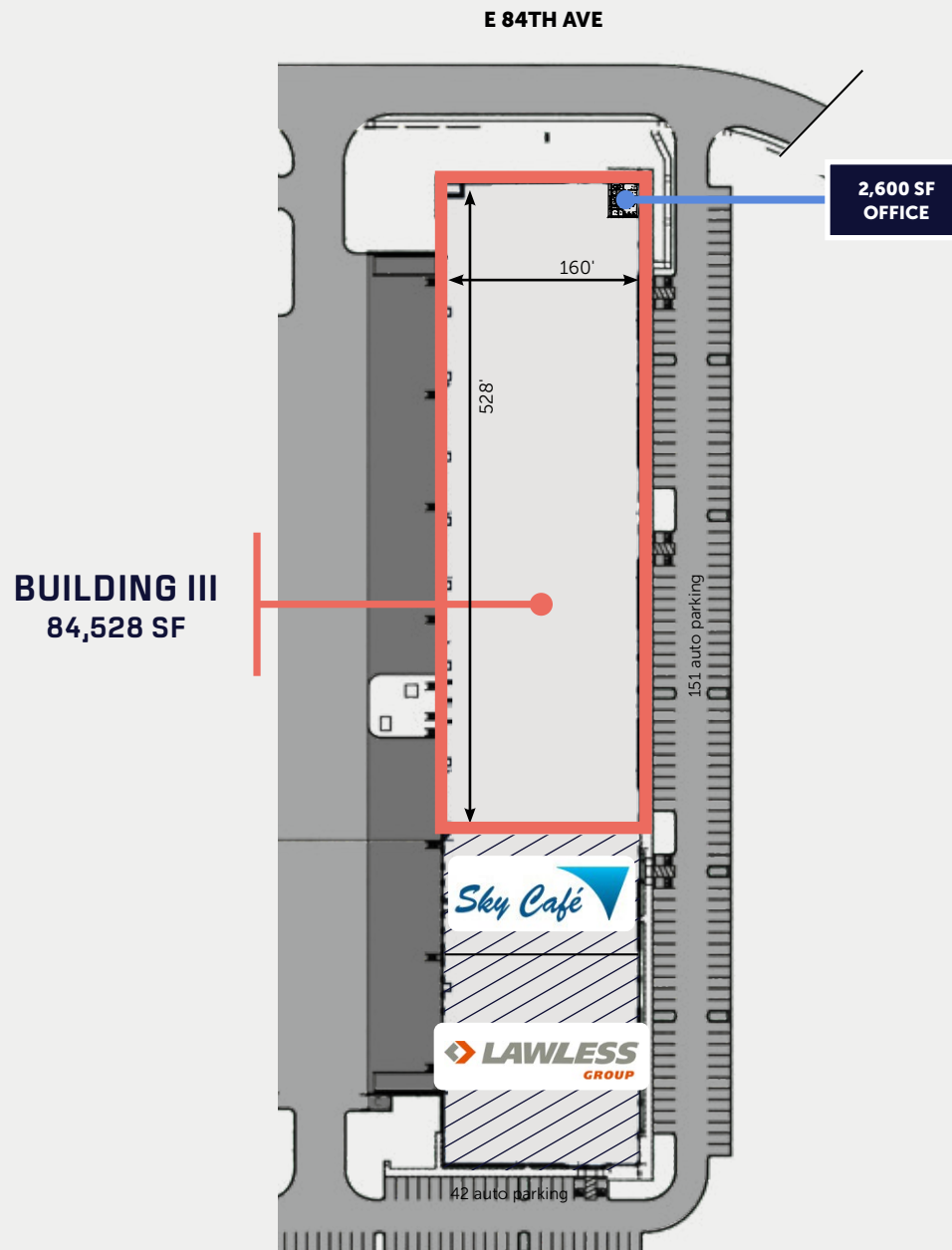


SPECULATIVE OFFICE AREA



1,858 SF
office area





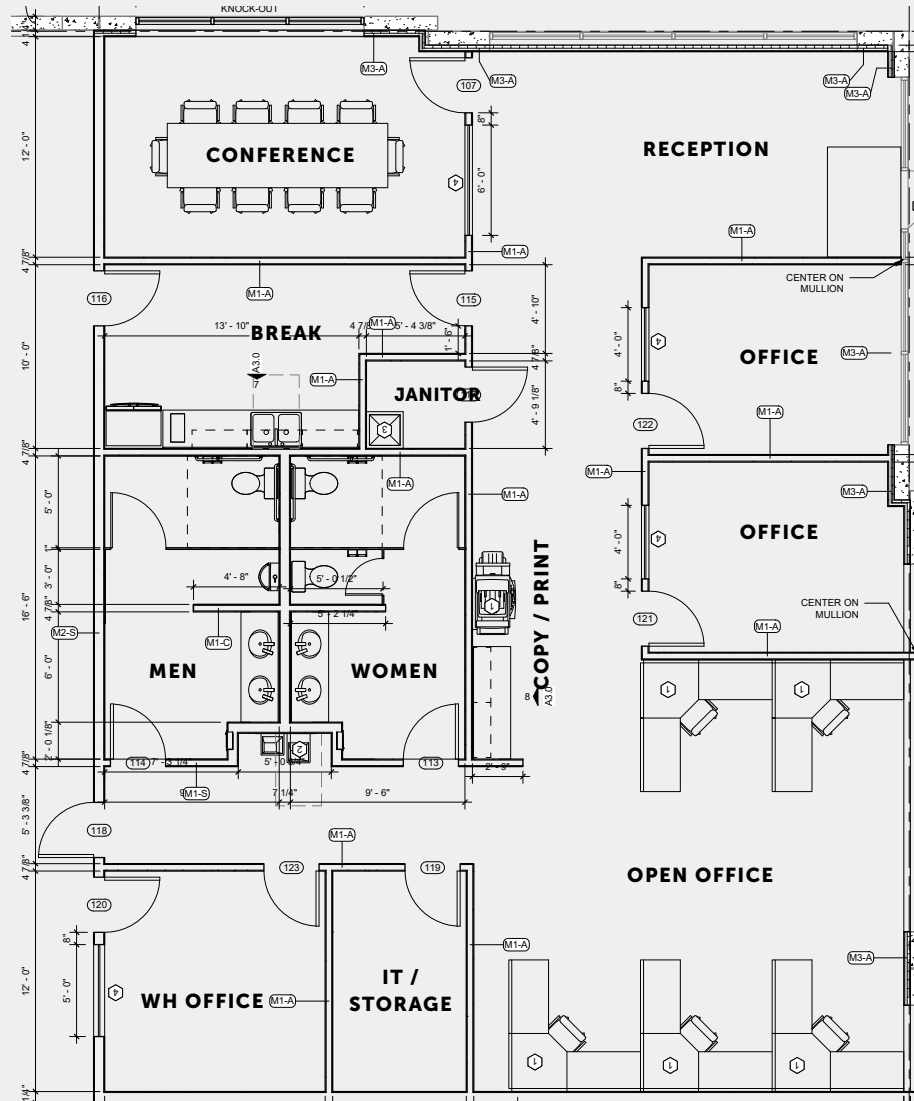
AVAILABLE NOW

84,528 SF AVAILABLE

- 16,640 SF min. divisibility
- 2,600 SF office space
- 104 auto parking available
- up to 33 trailer parking available
- 32' clear height
- 27 docks (8 levelers)
- 1 drive-in door (12' x 14')
- 50' x 52' column spacing (60' speed bay)
- 6" thick unreinforced slab
- 2,000-amp 480/277v power service
- ESFR sprinkler system



SPECULATIVE OFFICE AREA



2,600 SF
office area





Ascent Commerce Center

ASCENTCOMMERCECENTER.COM

COURTNEY SCHNEIDER
Vice President, Market Officer, Ambrose
cschneider@ambrosepg.com | 303.550.2154

DREW MCMANUS, SIOR
Vice Chairman, Cushman & Wakefield
drew.mcmanus@cushwake.com | 303.810.8633

BRYAN FRY, SIOR
Senior Director, Cushman & Wakefield
bryan.fry@cushwake.com | 303.312.4221

RYAN SEARLE, SIOR
Senior Director, Cushman & Wakefield
ryan.searle@cushwake.com | 720.260.5859