

Toledo Logistics Park - Southeast

106-ACRE INDUSTRIAL PARK SITUATED WITHIN THE TOLEDO MARKET

Located in Lake Township, Wood County, Ohio

Direct access to I-280 [less than 1 mile]

Easy access to I-75 via I-280 and I-80/90

Visible from and located directly adjacent to I-280

Business friendly municipality with incentives available

Ideal configuration for distribution, light or heavy manufacturing & assembly

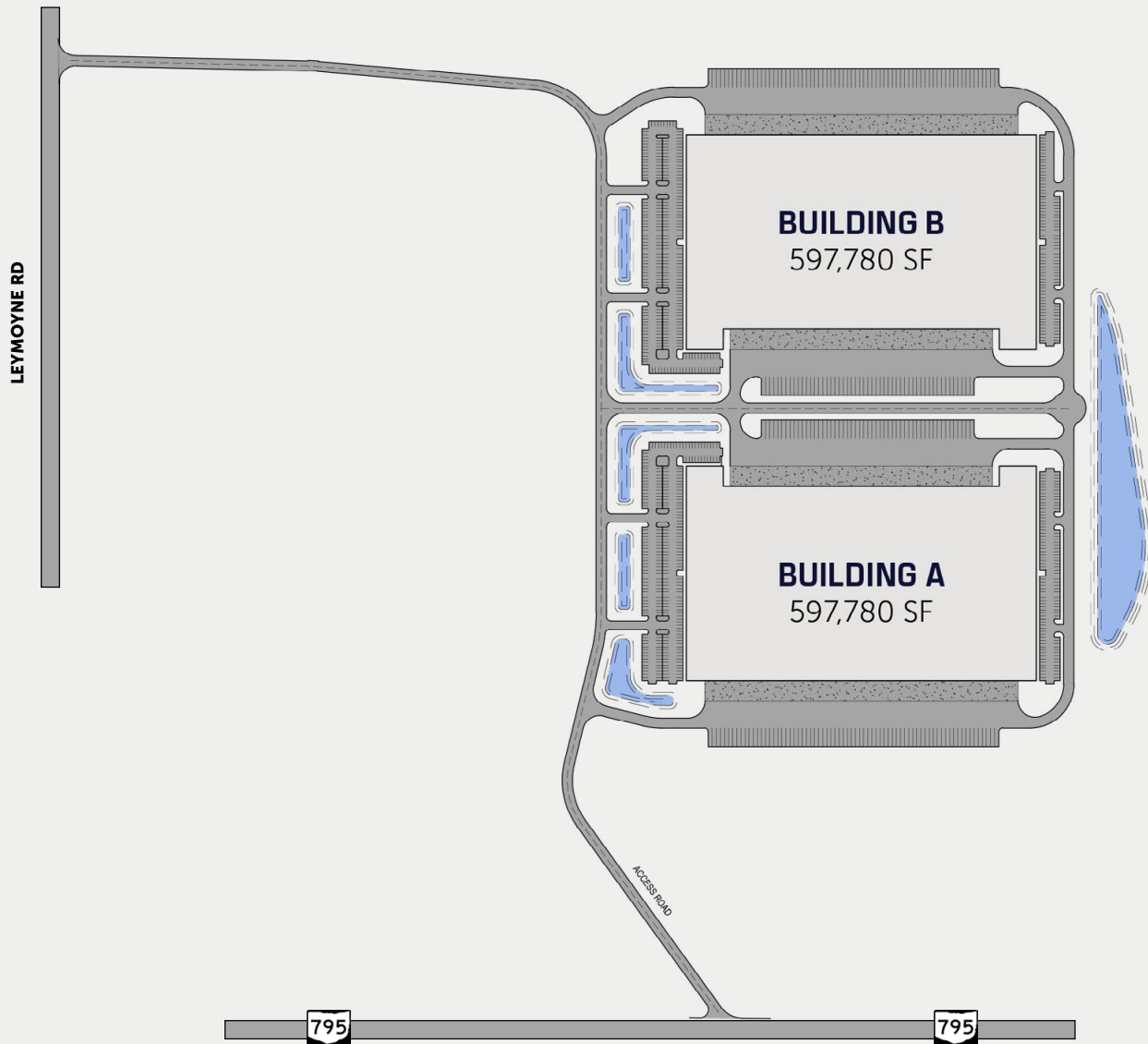
High labor availability

Site can readily accommodate end users with footprints exceeding 1,000,000 square feet

Rail adjacent to site

BUILD-TO-SUIT OPPORTUNITIES AVAILABLE







SURROUNDING LABOR (2025)

▶ Total Population

121,846	592,625	878,716
within 15 min drive	within 30 min drive	within 30 min drive

▶ Employed Civilian Population 16+

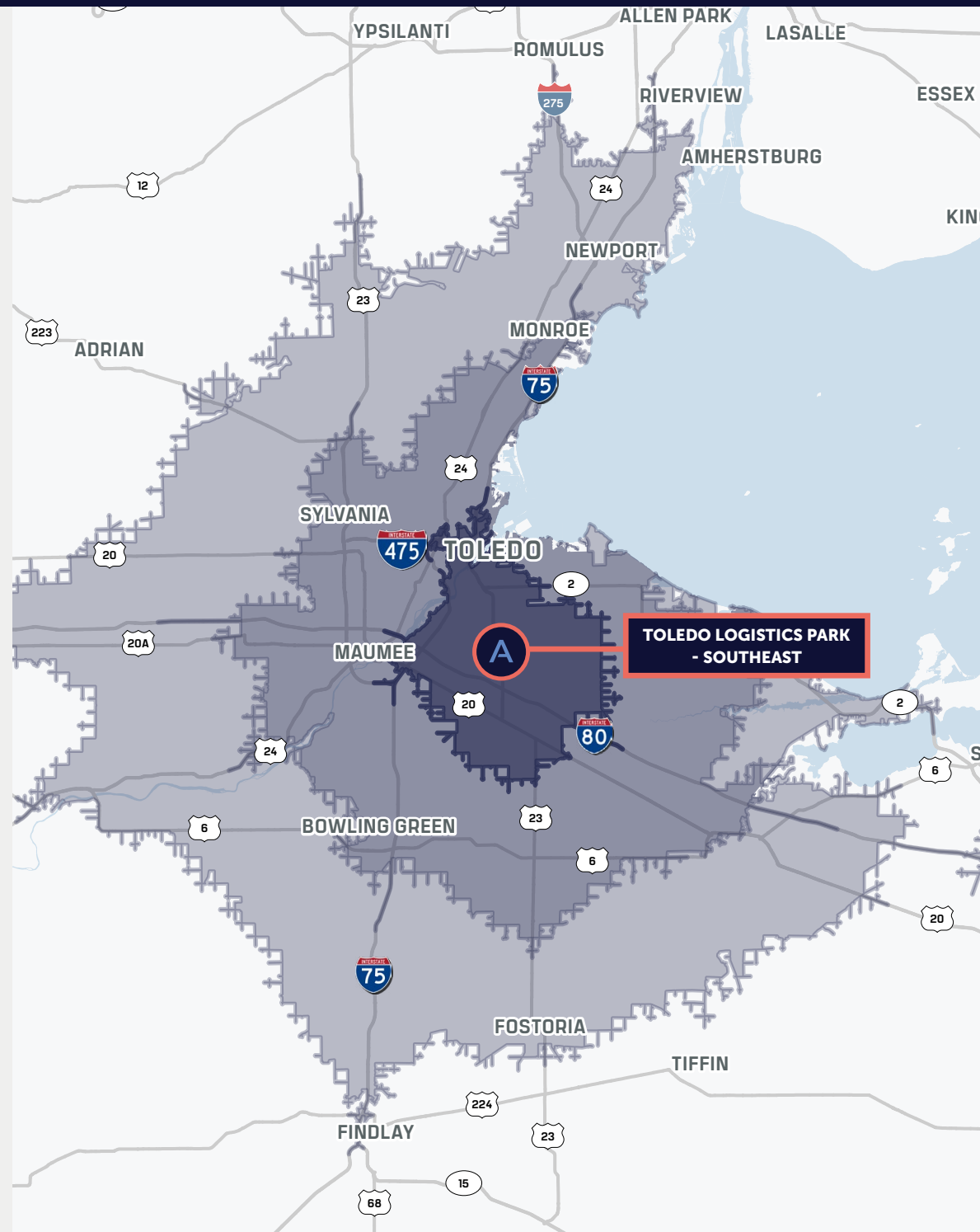
56,208	295,586	436,598
within 15 min drive	within 30 min drive	within 30 min drive

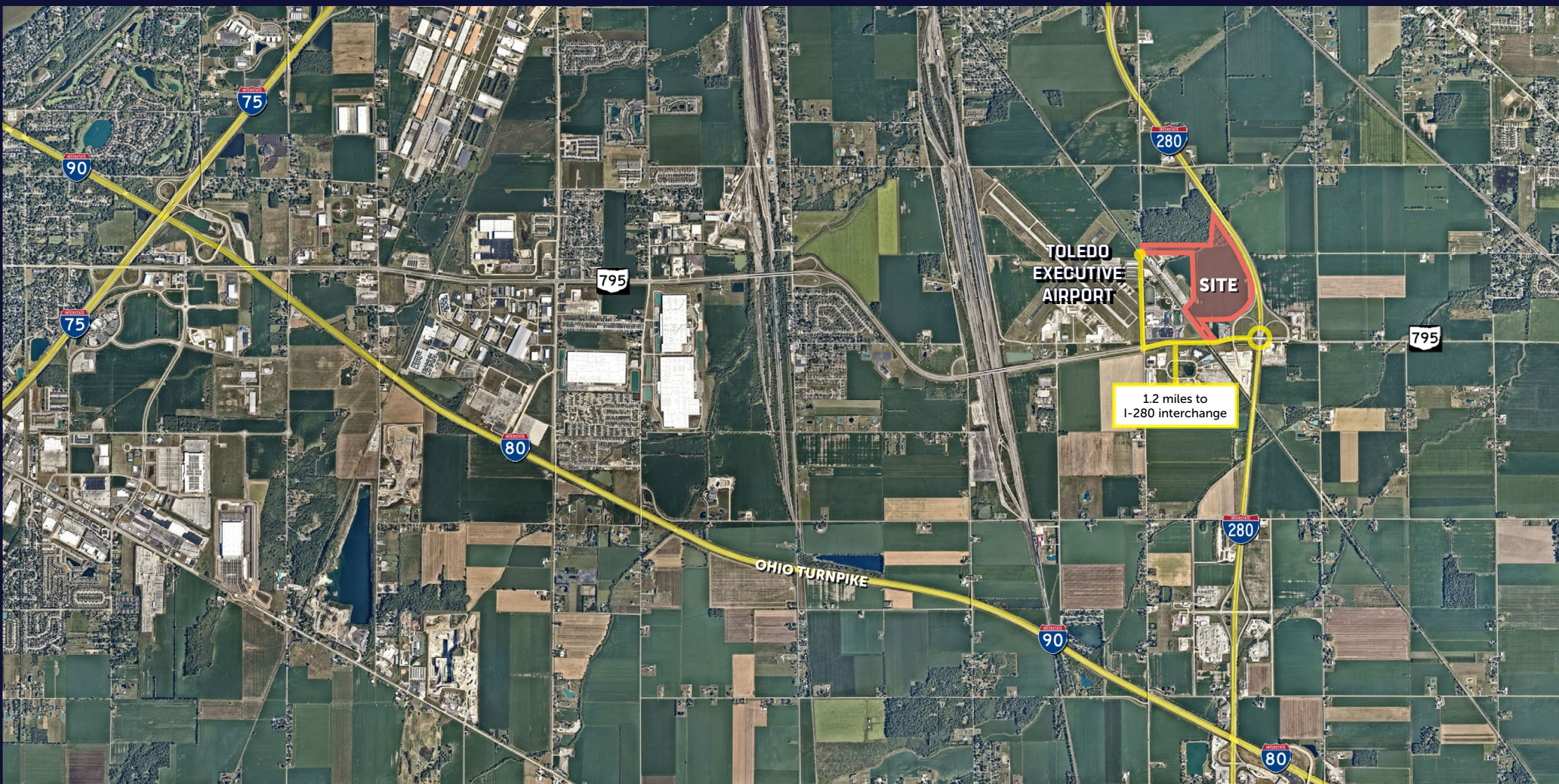
▶ Occupation: Production

5,702	24,801	40,975
within 15 min drive	within 30 min drive	within 30 min drive

▶ Est. Percentage of People in Production, Transportation & Moving Materials

23.14%	17.42%	22.01%
within 15 min drive	within 30 min drive	within 30 min drive





Toledo Logistics Park - Southeast

AMBROSEPG.COM/PROPERTIES

DAVID DUNBAR
Market Officer, Ambrose
ddunbar@ambrosepg.com | 317.690.8450

JEREMY KRAUS
Executive Vice President, CBRE
jeremy.kraus@cbre.com | 513.623.1225

BRIAN MCMAHON
President, Danberry National, Ltd.
brian@danberrynational.com | 419.297.1134

AMBROSE CBRE

