



CLICK OR SCAN

# Cincinnati Logistics Park - Airport West

**84.77-ACRE CLASS A INDUSTRIAL PARK**

**40,000 - 260,072 SF AVAILABLE NOW IN BUILDINGS I & II**

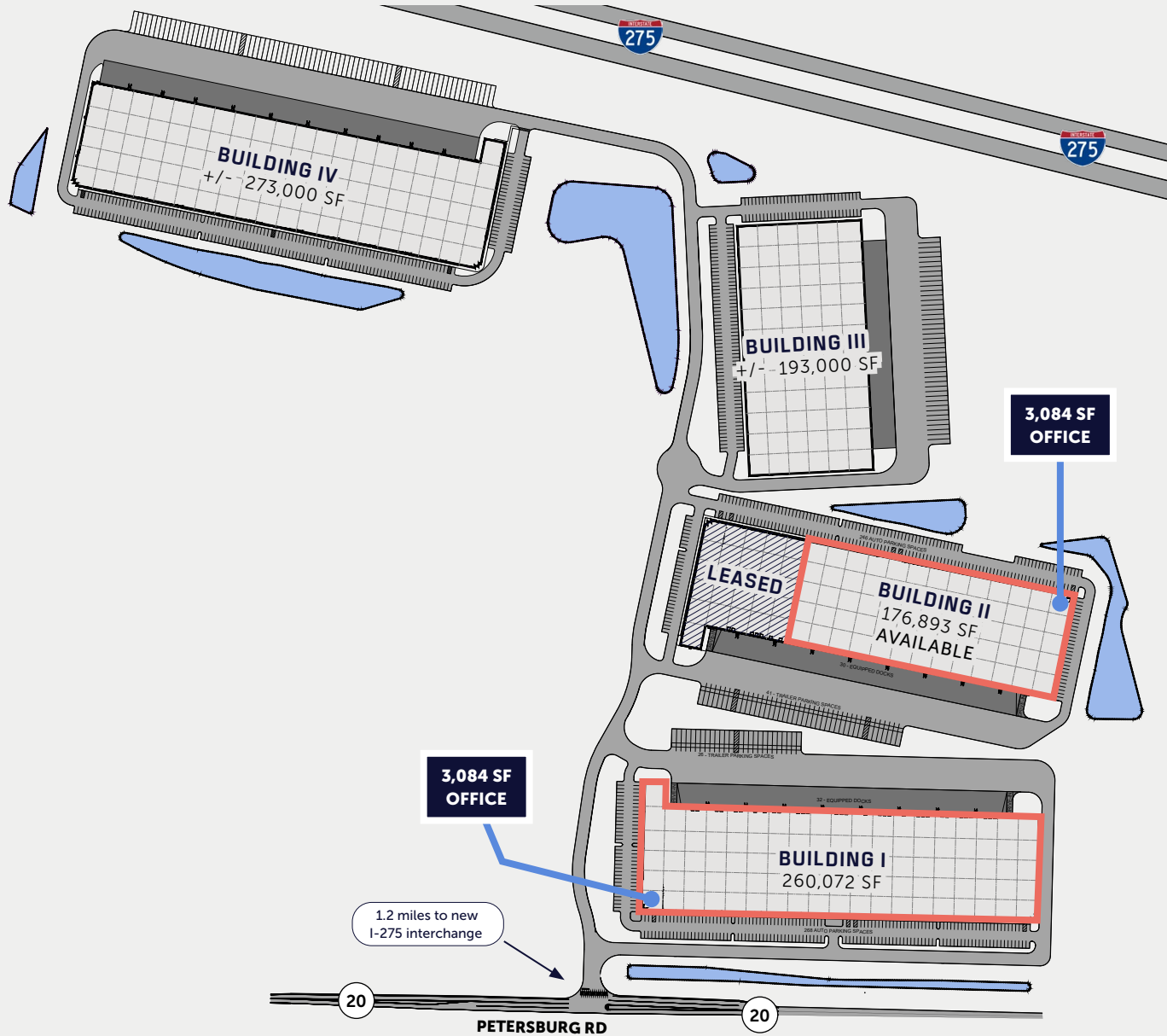
40,000 - 273,000 SF spaces available for build-to-suit

AMBROSE

Colliers

**BUILDING I:** 19.55 acres    **BUILDING II:** 16.84 acres    **BUILDING III:** 13.83 acres    **BUILDING IV:** 27.21 acres

**COMMON AREAS:** 7.34 acres



## Building I

AVAILABLE IMMEDIATELY

## Building II

AVAILABLE IMMEDIATELY

### WATER

Boone Co. Water

### SEWER

Boone Co. Sewer Dept.

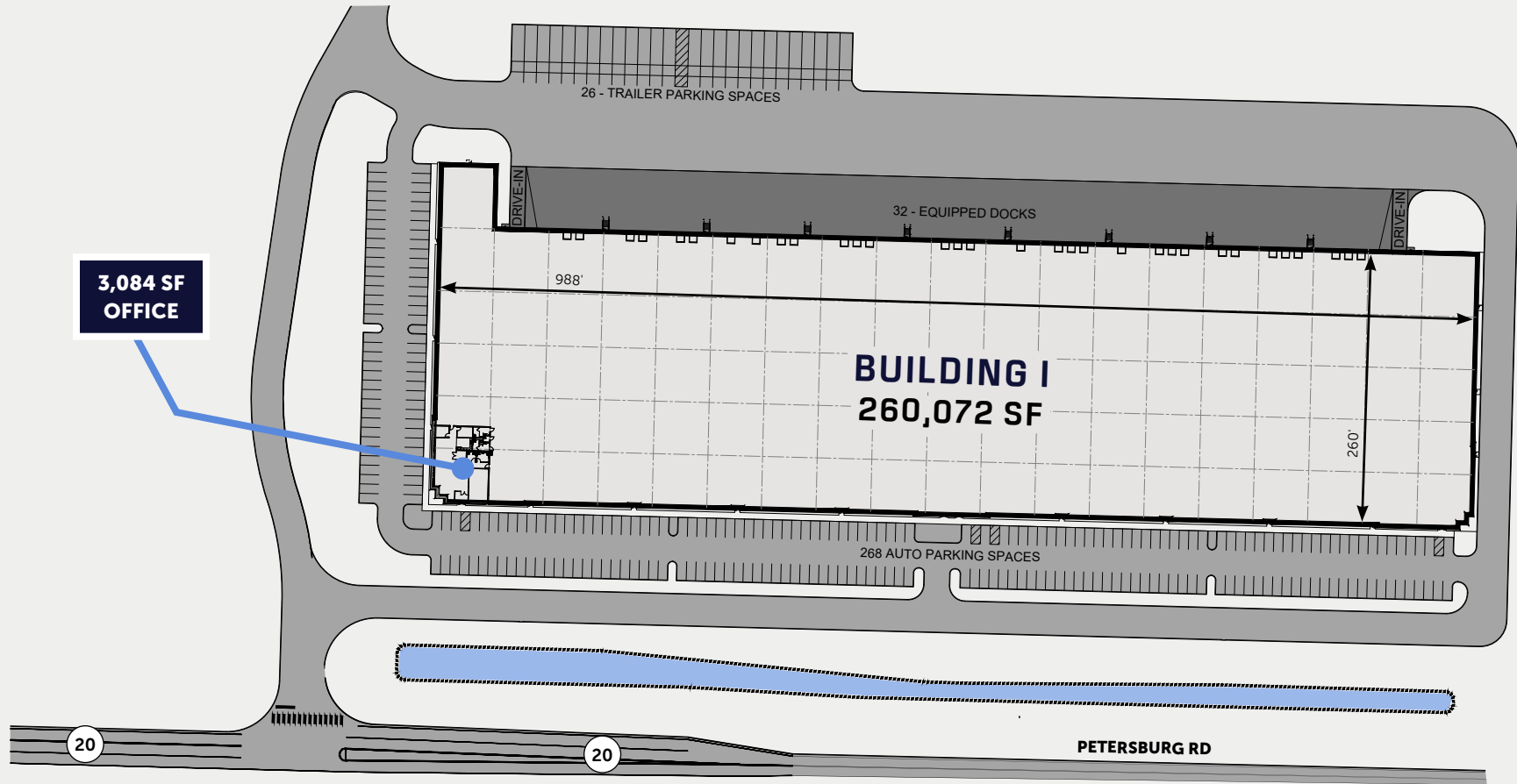
### POWER & GAS

Duke Energy

### DATA

Cincinnati Bell

ALL BUILDINGS SEEKING  
LEED® CERTIFICATION



**260,072 SF**

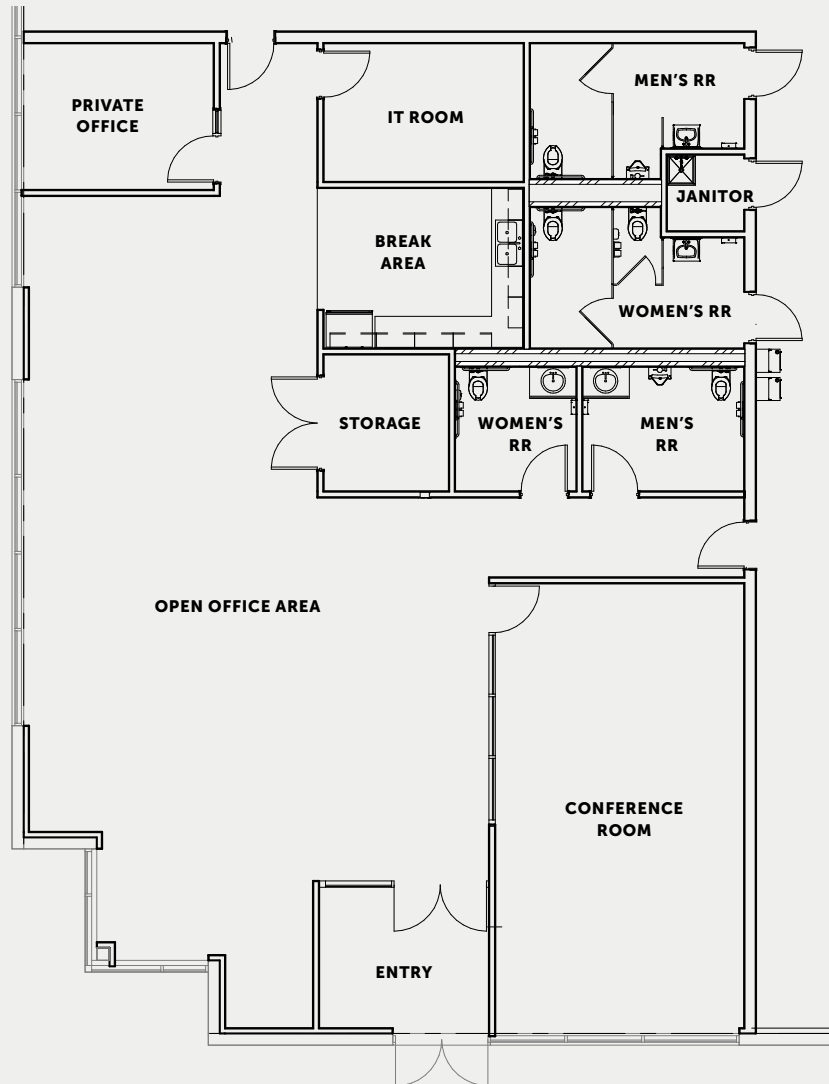
- 40,000 SF minimum divisibility
- 32' clear height
- 268 auto parking

- 26 trailer parking
- 32 docks
- 2 drive-in doors
- 50' x 52' typical bays

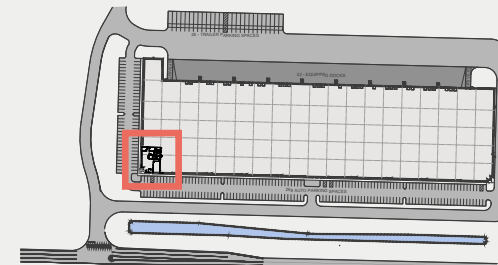
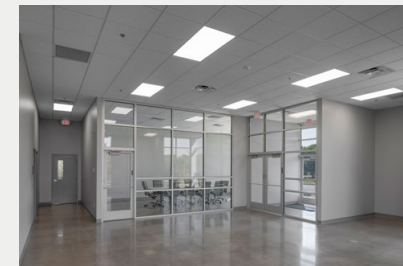
- 60' x 50' speed bays
- 7" thick unreinforced slab
- (2) 2,000-amp 480/277 v three-phase service

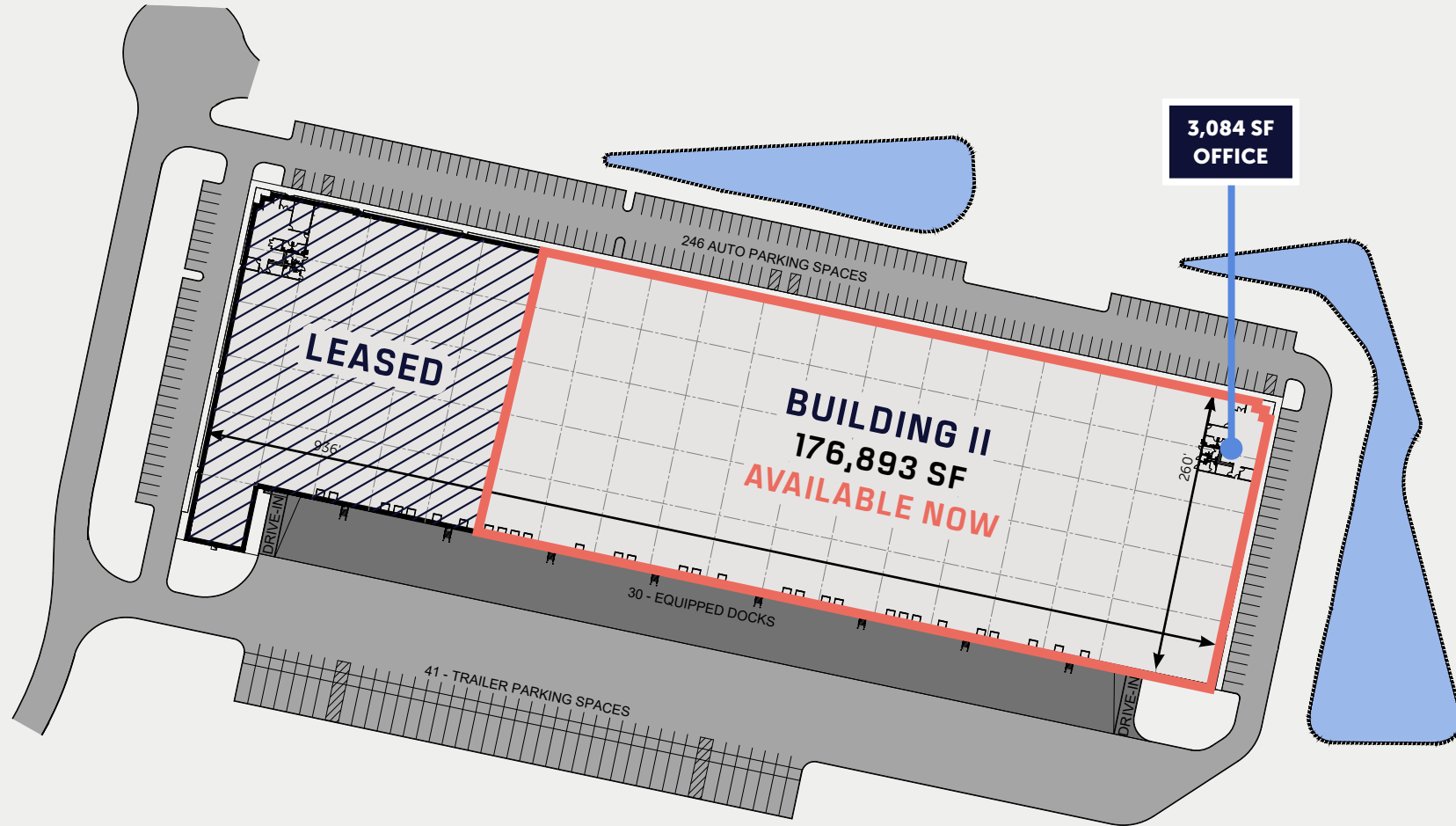
**AVAILABLE IMMEDIATELY**  
for Fixturing

**LEED® SILVER CERTIFIED**



**3,084 SF**  
**OFFICE AREA**





## 176,893 SF

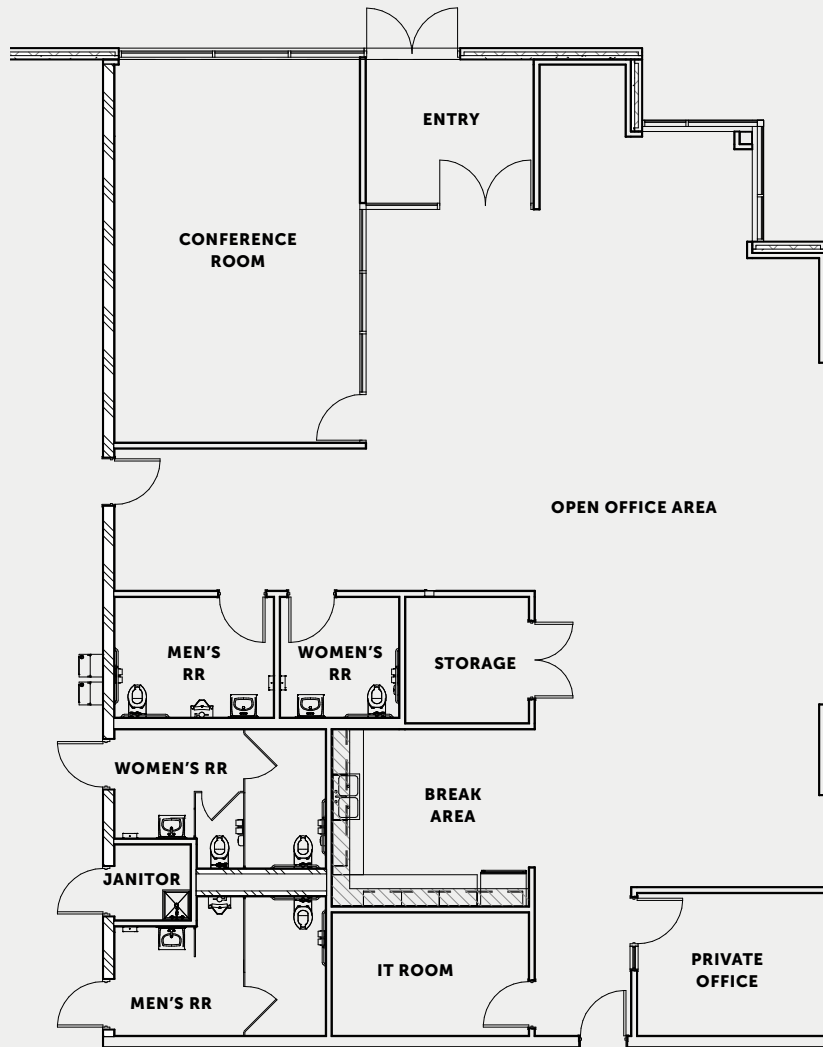
- 40,000 SF minimum divisibility
- 32' clear height
- 147 auto parking available

- 41 trailer parking
- 23 docks available
- 1 drive-in door available
- 50' x 52' typical bays

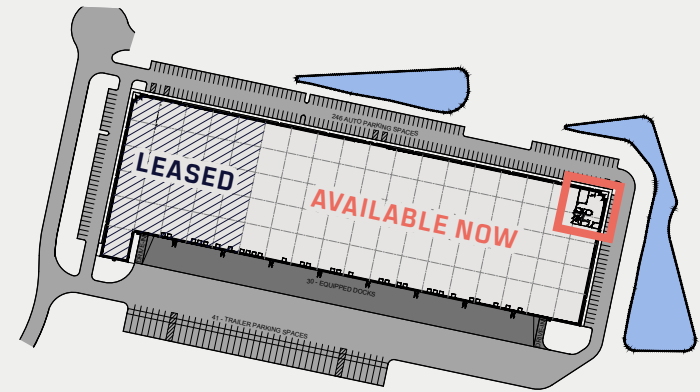
- 60' x 50' speed bays
- 7" thick unreinforced slab
- (2) 2,000-amp 480/277 v three-phase service

**AVAILABLE IMMEDIATELY**  
for Fixturing

**LEED® SILVER CERTIFIED**



3,084 SF  
OFFICE AREA



## A

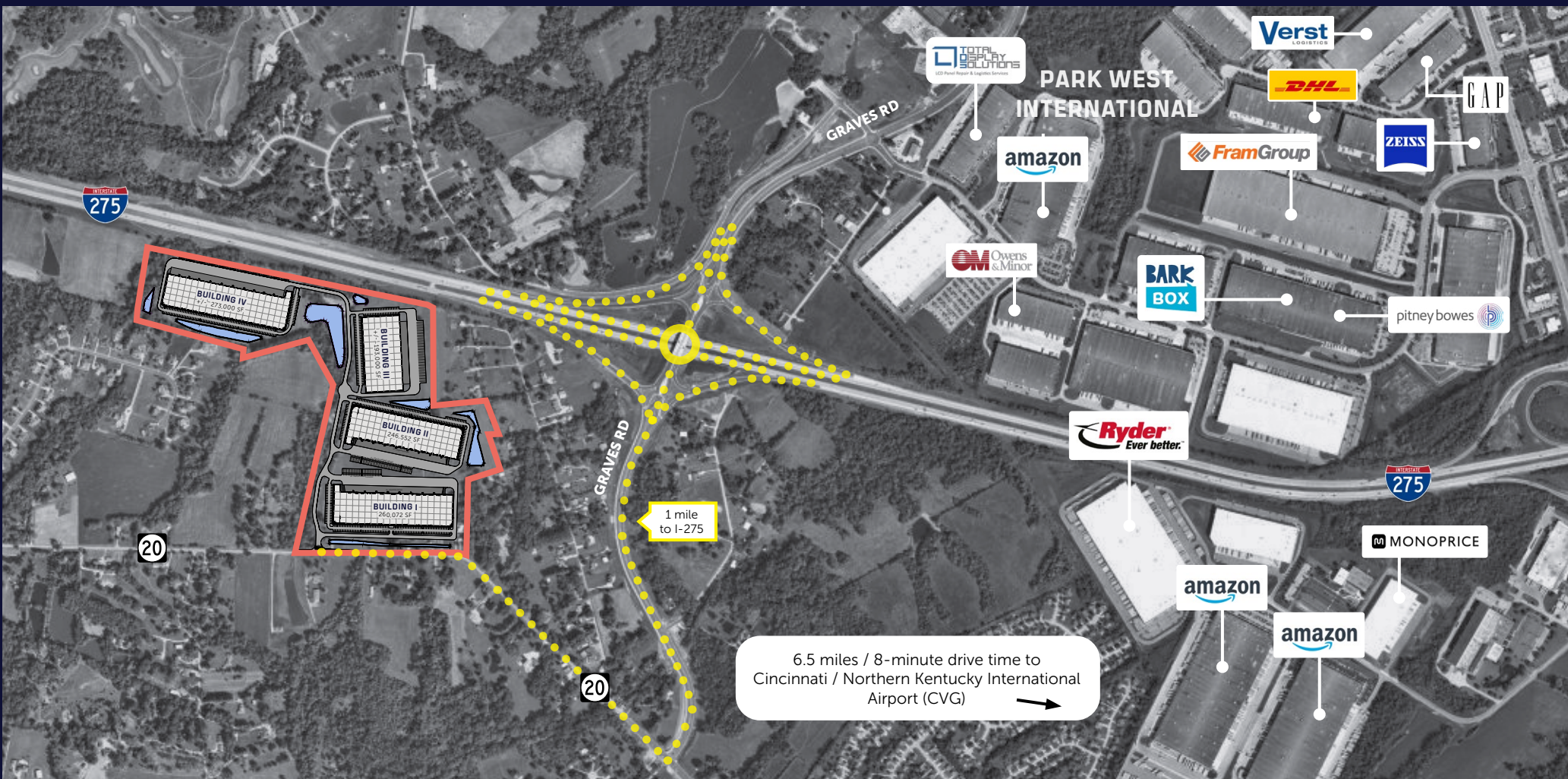
## ACCESS &amp; LABOR

Located along I-275 just six miles west of the Cincinnati / Northern Kentucky International Airport, Cincinnati Logistics Park - Airport West offers immediate access to I-275, easy access to I-71, I-75 and I-74 and a large, skilled labor pool.

- Located in Burlington, Kentucky, Boone County
- **Immediate access to I-275 via new Graves Rd interchange**
- **Cincinnati region offers 3 interstates** – I-71, I-75 and I-74 – all easily accessed via I-275
- Six miles west of the Cincinnati / Northern Kentucky International Airport (CVG), the **7th largest cargo airport in North America** and home to several freight and cargo companies, including DHL, FedEx and Amazon Air
- **Amazon Air Hub** is a \$1.5B investment at CVG that covers 1,000+ acres with 2.6M SF of facilities and up to 100 aircraft parking positions
- Ideal configuration for bulk distribution and local and regional distribution
- **Large surrounding labor pool** with 10 regional colleges, universities and career campuses that offer supply chain management degrees and certificates

Within one-day drive of nearly 60% of U.S. population





# Cincinnati Logistics Park - Airport West

[VISIT PARK WEBSITE](#)

**JOHN GARTNER, SIOR**

Executive Vice President, Colliers  
john.gartner@colliers.com | 513.562.2207

**STEPHEN LINDLEY**

Senior Vice President, Investments, Ambrose  
slindley@ambrosepg.com | 317.414.2112

**ERIN CASEY**

Senior Vice President, Colliers  
eric.casey@colliers.com | 513.562.2225

**DAVID DUNBAR**

Market Officer, Ambrose  
ddunbar@ambrosepg.com | 317.331.6100

**ANDREW JACOB**

Associate Vice President, Colliers  
andrew.jacob@colliers.com | 513.562.2254

**AMBROSE**

