

# Cincinnati Logistics Park - Airport West

**84.77-ACRE CLASS A INDUSTRIAL PARK**

**40,000 - 260,072 SF AVAILABLE NOW IN BUILDINGS I & II**

40,000 - 273,000 SF spaces available for build-to-suit



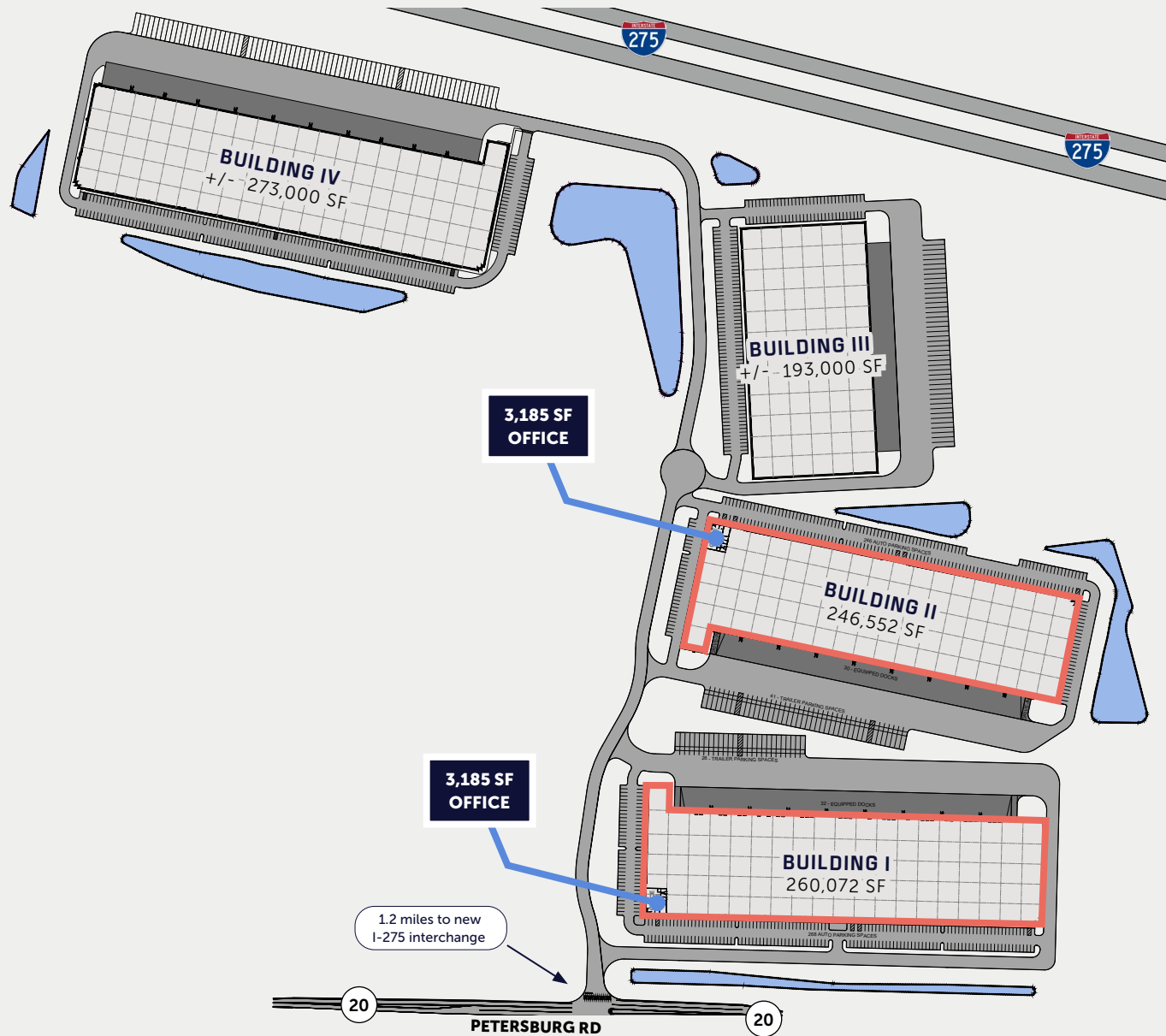
BUILDING I: 19.99 acres

BUILDING II: 16.84 acres

BUILDING III: 13.83 acres

BUILDING IV: 27.21 acres

COMMON AREAS: 6.9 acres



## Building I

**AVAILABLE IMMEDIATELY**

Available for Fixturing

## Building II

**AVAILABLE IMMEDIATELY**

for Fixturing

### WATER

Boone Co. Water

### SEWER

Boone Co. Sewer Dept.

### POWER & GAS

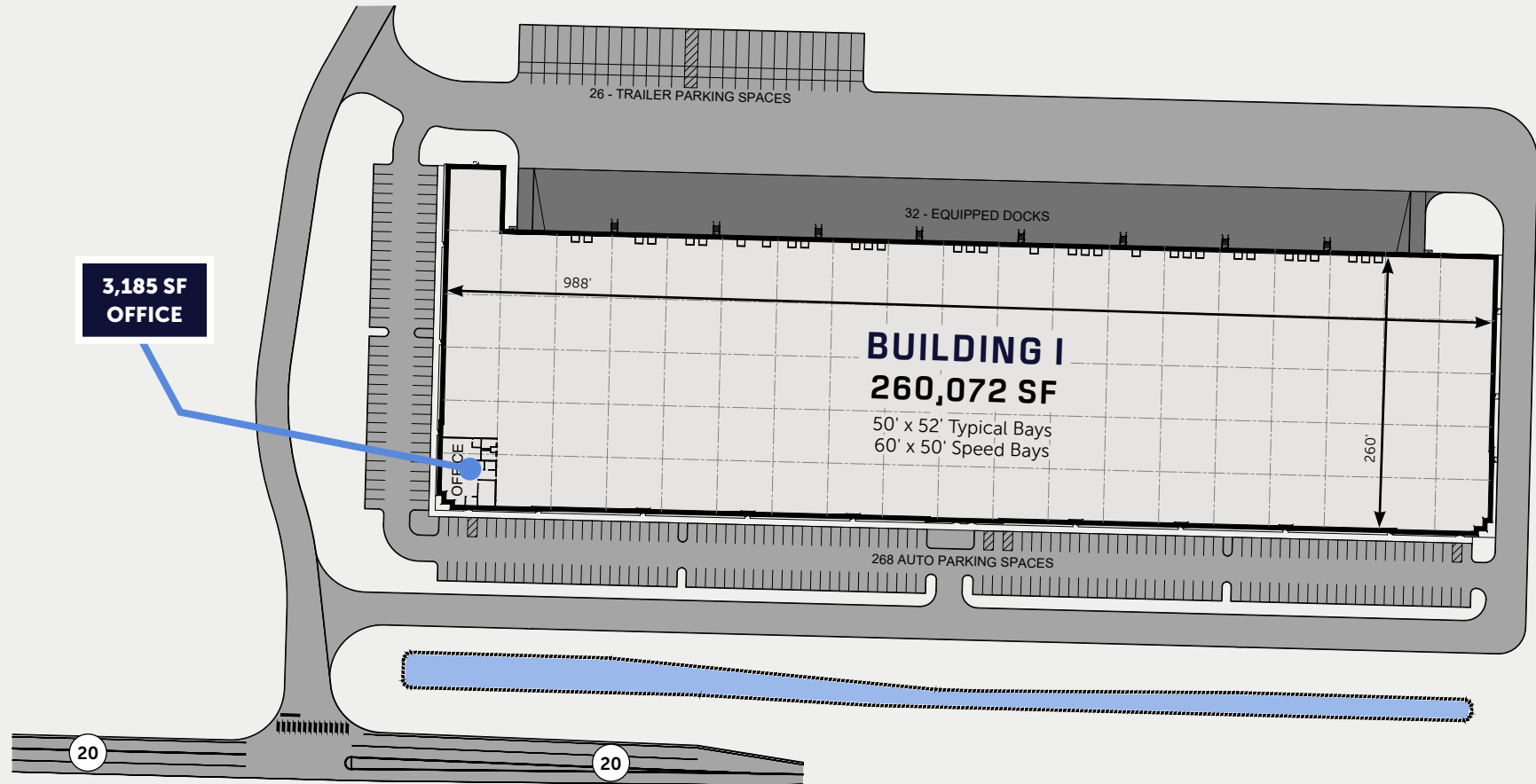
Duke Energy

### DATA

Cincinnati Bell

**ALL BUILDINGS SEEKING  
LEED® CERTIFICATION**

2440 AIRWEST BOULEVARD, BURLINGTON, KY 41048



260,072 SF



40,000 SF min. divisibility



32' clear height



268 auto parking



26 trailer parking



32 docks



2 drive-in doors



7" thick unreinforced slab

(2) 2,000-amp 480/277v  
three-phase servicesAVAILABLE IMMEDIATELY  
for Fixturing

SEEKING LEED® CERTIFICATION

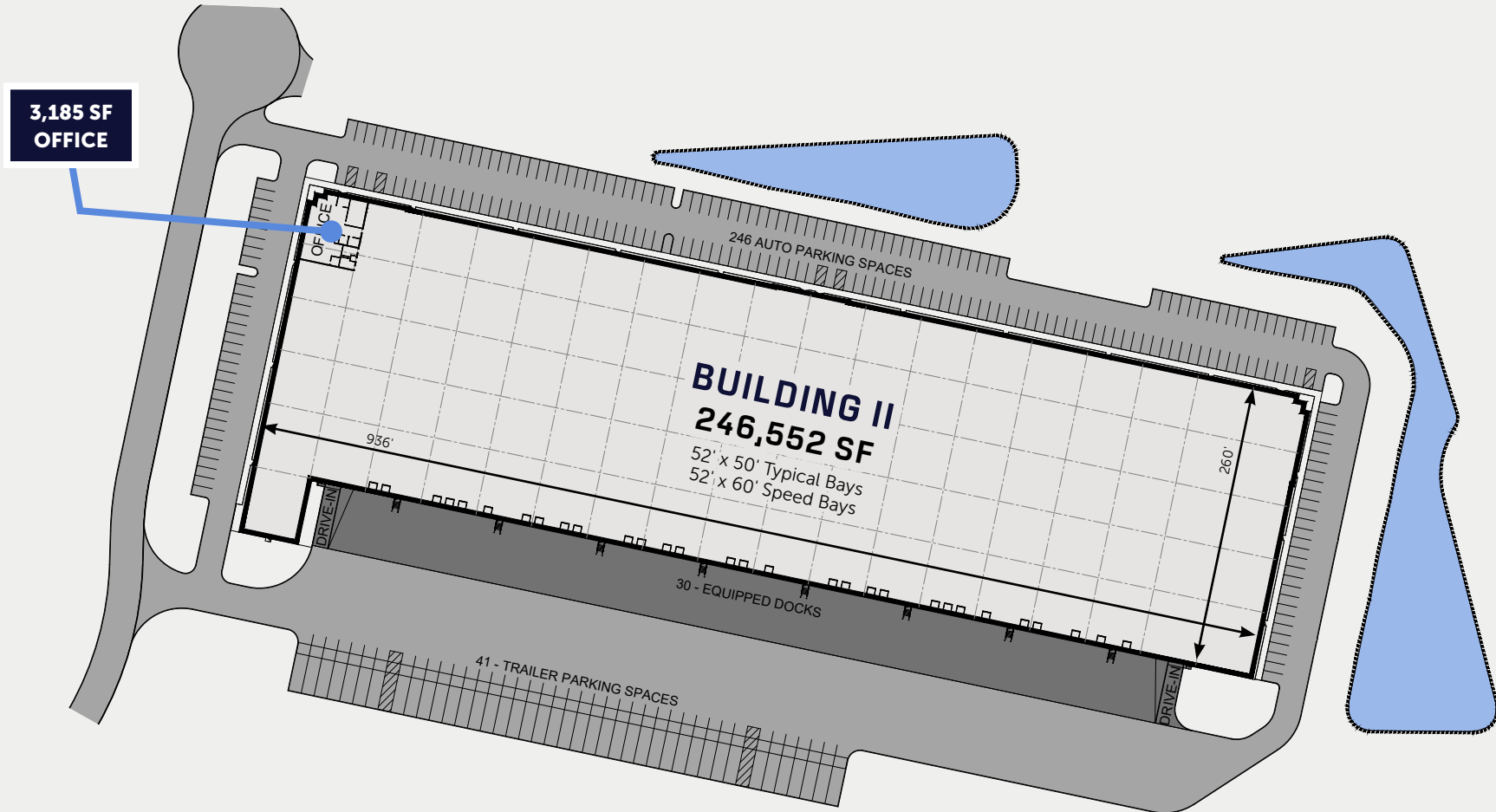


## BUILDING II SITE PLAN

16.84 ACRES



2424 AIRWEST BOULEVARD, BURLINGTON, KY 41048



246,552 SF



40,000 SF min. divisibility



32' clear height



246 auto parking



41 trailer parking



30 docks



2 drive-in doors



7" thick unreinforced slab



(2) 2000-amp 480/277v  
three-phase services

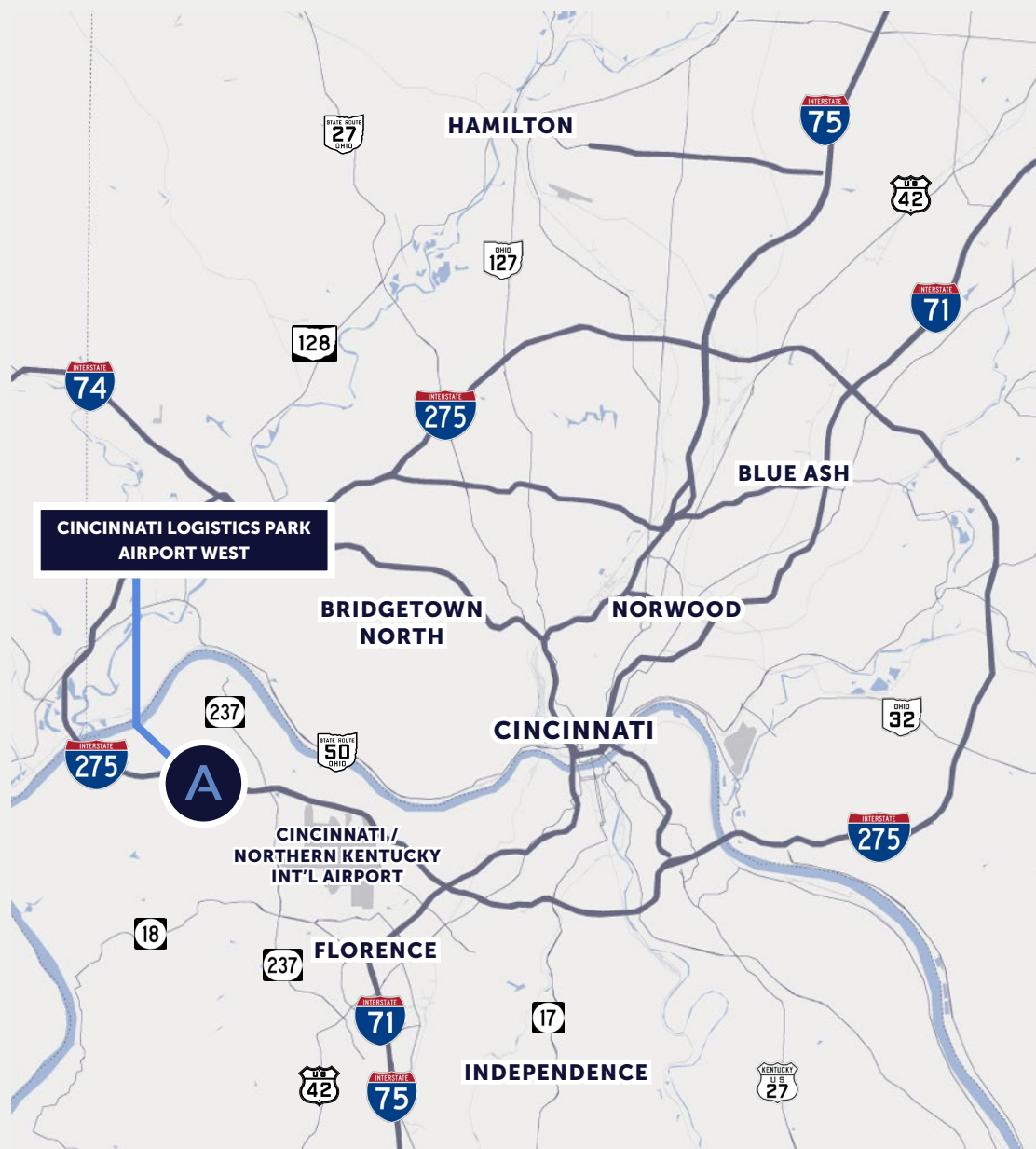
AVAILABLE IMMEDIATELY  
for Fixturing

SEEKING LEED® CERTIFICATION

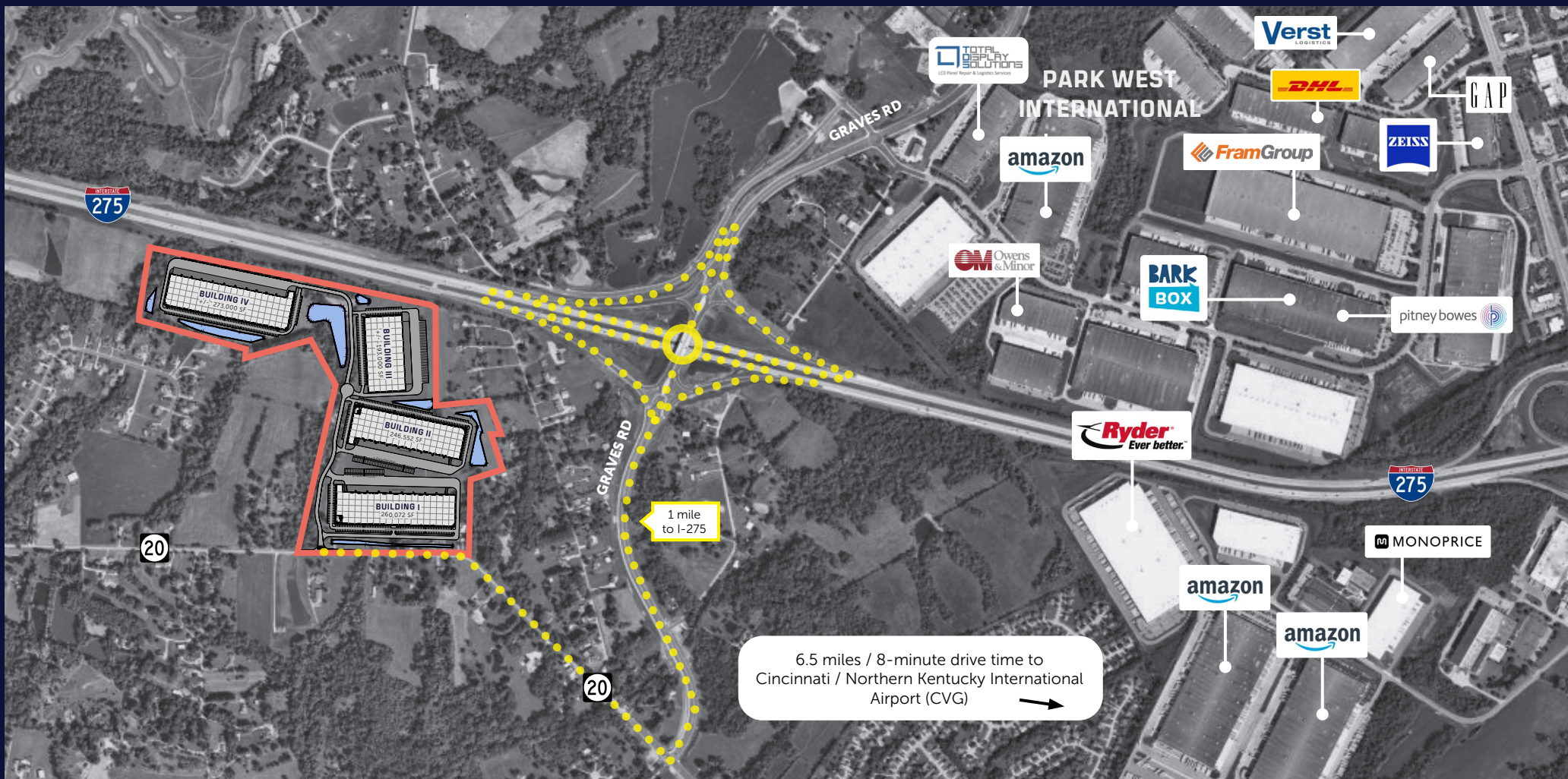
Located along I-275 just six miles west of the Cincinnati / Northern Kentucky International Airport, Cincinnati Logistics Park - Airport West offers immediate access to I-275, easy access to I-71, I-75 and I-74 and a large, skilled labor pool.

- Located in Burlington, Kentucky, Boone County
- **Immediate access to I-275 via new Graves Rd interchange**
- **Cincinnati region offers 3 interstates** — I-71, I-75 and I-74 - all easily accessed via I-275
- Six miles west of the Cincinnati / Northern Kentucky International Airport (CVG), the **7th largest cargo airport in North America** and home to several freight and cargo companies, including DHL, FedEx and Amazon Air
- **Amazon Air Hub** is a \$1.5B investment at CVG that covers 1,000+ acres with 2.6M SF of facilities and up to 100 aircraft parking positions
- Ideal configuration for bulk distribution and local and regional distribution
- **Large surrounding labor pool** with 10 regional colleges, universities and career campuses that offer supply chain management degrees and certificates

Within one-day drive of  
nearly 60% of U.S. population







# Cincinnati Logistics Park - Airport West

[CINCYLOGISTICS-AIRPORTWEST.COM](http://CINCYLOGISTICS-AIRPORTWEST.COM)

**JOHN GARTNER, SIOR**  
Executive Vice President, Colliers  
[john.gartner@colliers.com](mailto:john.gartner@colliers.com) | 513.562.2207

**STEPHEN LINDLEY**  
Senior Vice President, Investments, Ambrose  
[slindley@ambrosepg.com](mailto:slindley@ambrosepg.com) | 317.414.2112

**ERIN CASEY**  
Senior Vice President, Colliers  
[eric.casey@colliers.com](mailto:eric.casey@colliers.com) | 513.562.2225

**DAVID DUNBAR**  
Associate Market Officer, Ambrose  
[ddunbar@ambrosepg.com](mailto:ddunbar@ambrosepg.com) | 317.331.6100

**ANDREW JACOB**  
Senior Associate, Colliers  
[andrew.jacob@colliers.com](mailto:andrew.jacob@colliers.com) | 513.562.2254

**AMBROSE**

